



National Federation of Music Clubs – Festival Theory Test  
SAMPLE - LEVEL 2 - SAMPLE

Name: \_\_\_\_\_ Date: \_\_\_\_\_ ID: \_\_\_\_\_ Rating: \_\_\_\_\_  
(Superior 90-100, Excellent 80-89.5, Satisfactory 70-79.5,  
Fair 60-69.5, Needs Improvement <60)

1. Write the music alphabet going up two times. The first letter is given. (13)

A \_\_\_\_\_

2. Write the name of the note below each measure. Watch the clef signs. (9)

\_\_\_\_\_



3. Draw a whole note on the staff with the same letter name as written below each measure. Watch the clef signs. (10)

D B E F C B F G D A

4. Name the notes stepping up the bass staff. (9)

\_\_\_\_\_

5. Circle Half Step or Whole Step under each keyboard to indicate the distance between the two keys with an X. (4)



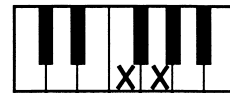
Half Step
Whole Step



Half Step
Whole Step



Half Step
Whole Step



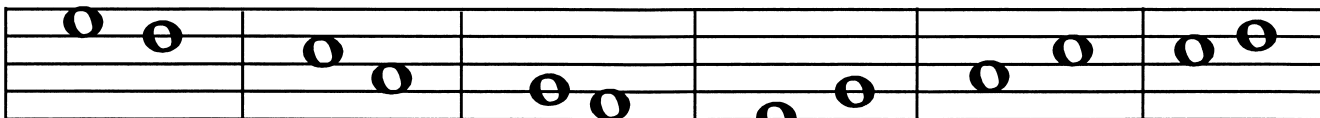
Half Step
Whole Step

6. Circle the correct answer. (1)

A. Another name for a step is a:	2nd	3rd
B. Another name for a 3rd is a:	step	skip

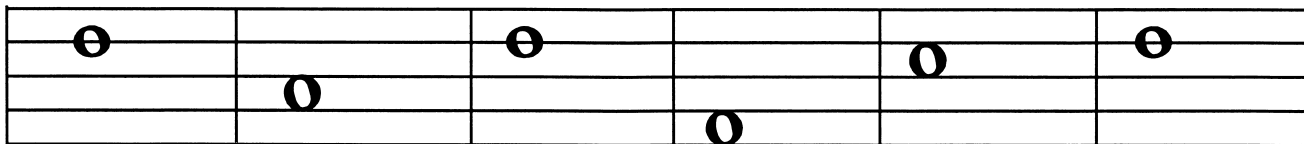


7. Write 2nd or 3rd in the blank below each measure to show the distance between each pair of notes. (12)



\_\_\_\_\_

8. After each given note, draw one whole note in each measure that moves the distance and direction indicated below each measure. (12)



2nd down

3rd up

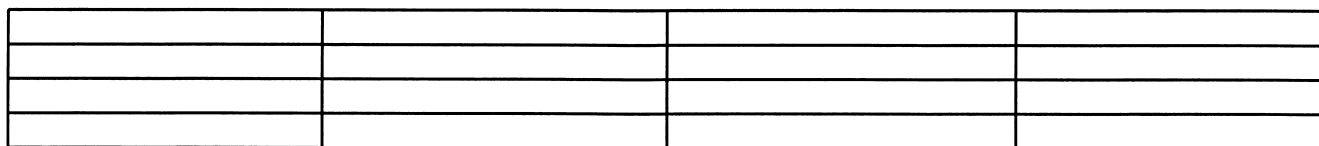
3rd down

2nd up

2nd up

3rd down

9. Draw the type of note named below each measure on the staff where indicated. Remember the stem rule. (4)



Whole note  
Line 3

Dotted half note  
Line 1

Whole rest

Quarter note  
Line 4



14. On the following staff, circle the symbol that represents the softer dynamic. (2)



15. On the following staff, circle two notes that represent a skip down on the staff. (2)



16. On the following staff, circle a half rest. (2)



17. Write the letter in the blank that defines each musical term or symbol. (3)

\_\_\_\_\_ #

A. Flat

\_\_\_\_\_ Beat

B. the pulse of music

\_\_\_\_\_ b

C. Sharp