



## Level 4 Practice Test 2020

1. Write the name of the major key represented by these key signatures.

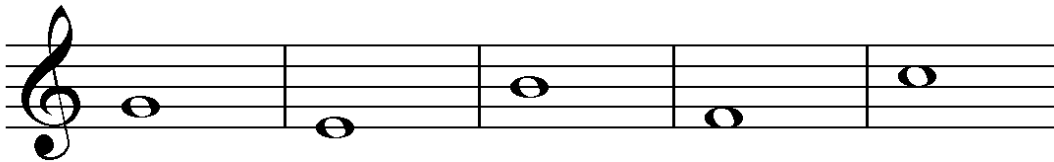


\_\_\_\_\_



\_\_\_\_\_

2. Form **triads** above each of these notes.

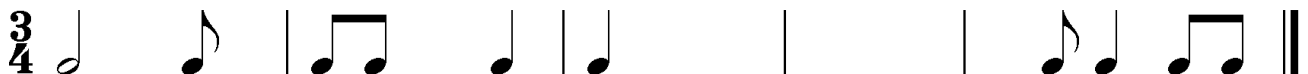


3. Choose the words from the box to match the dynamic symbol with its meaning.

<i>dim.</i>	_____	<i>f</i>	_____
<i>p</i>	_____	<i>mf</i>	_____
<i>mp</i>	_____	<i>cresc.</i>	_____

loud
soft
gradually louder
gradually softer
moderately loud
moderately soft

4. These measures are incomplete. Add **one REST** to complete each measure in **3/4 time**.





11. Write an **ENHARMONIC** note next to the given note.

12. Write the letter in the space that matches the definition.

\_\_\_\_\_ *moderato*

A. tempo word meaning fast and lively

\_\_\_\_\_ *allegro*

B. > means to stress this note

\_\_\_\_\_ fermata

C. return to beginning and play until “fine” or the end

\_\_\_\_\_ accent

D. tempo word meaning walking speed

\_\_\_\_\_ *andante*

E.  $\frown$  means hold the note longer than its value

\_\_\_\_\_ *D.C. al fine*

F. tempo word meaning medium or moderate speed

13. Draw a **WHOLE** note to form the interval **ABOVE** the given note.