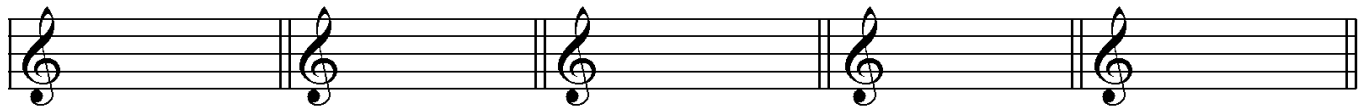


Level 5 Practice Test 2017-2020

1. Write the indicated key signatures.



e minor

G Major

F Major

D Major

a minor



G Major

D Major

F Major

a minor

e minor

2. A. Write the dynamic symbols from the box in order from **SOFTEST** to **LOUDEST**.

1. _____ 2. _____ 3. _____ 4. _____ 5. _____ 6. _____

B. Which term from the box shows the same meaning as the order of the dynamic symbols written above? _____

C. Which term from the box shows the opposite meaning? _____

<i>cresc.</i>	<i>dim.</i>
<i>mp</i>	<i>f</i>
<i>mf</i>	<i>p</i>
<i>ff</i>	<i>pp</i>

3. Match the definition to the correct term in the first column.

_____ phrase

_____ *a tempo*

_____ D.C. *al fine*

_____ arpeggio

_____ D.S. *al fine*

_____ *ritardando*

a. gradually slower

b. musical sentence

c. broken chord

d. return to original speed

e. go back to the sign and play until “fine” or the end

f. go back to the beginning and play until “fine” or the end

10. Write the requested interval **ABOVE** the given note.

M6 P4 M7 M2 P8

M6 M7 P4 P5 P8

11. Write a **descending** (going down) **a natural minor** scale for one octave, using **quarter notes**.

12. Write an **ascending** (going up) **e natural minor** scale for one octave, using **half notes**.

13. A. Write the dynamic symbols from the box in order from **LOUDEST** to **SOFTEST**.

1. _____ 2. _____ 3. _____ 4. _____ 5. _____ 6. _____

B. Which term from the box shows the same meaning as the order of the dynamic symbols written above? _____

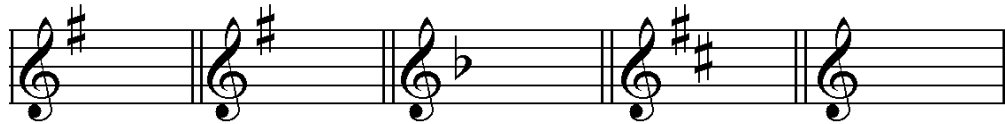
C. Which term from the box shows the opposite meaning? _____

<i>cresc.</i>	<i>dim.</i>
<i>mp</i>	<i>f</i>
<i>mf</i>	<i>p</i>
<i>ff</i>	<i>pp</i>



Level 5 Practice Answer Key 2017-2020

1. Write the indicated key signatures.



e minor G Major F Major D Major a minor



G Major D Major F Major a minor e minor

2. A. Write the dynamic symbols from the box in order from **SOFTEST** to **LOUDEST**.

1. *pp* 2. *p* 3. *mp* 4. *mf* 5. *f* 6. *ff* .

B. Which term from the box shows the same meaning as the order of the dynamic symbols written above? *cresc.*

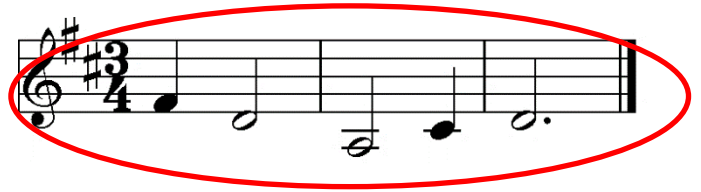
C. Which term from the box shows the opposite meaning? *dim.*

<i>cresc.</i>	<i>dim.</i>
<i>mp</i>	<i>f</i>
<i>mf</i>	<i>p</i>
<i>ff</i>	<i>pp</i>

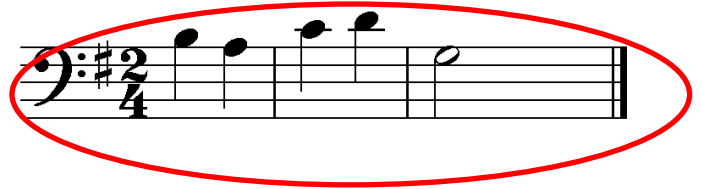
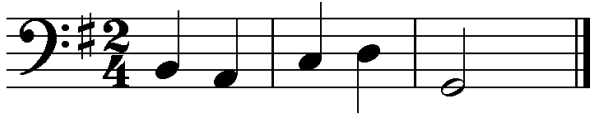
3. Match the definition to the correct term in the first column.

- | | |
|------------------------------|--|
| B phrase | a. gradually slower |
| D <i>a tempo</i> | b. musical sentence |
| F D.C. <i>al fine</i> | c. broken chord |
| C arpeggio | d. return to original speed |
| E D.S. <i>al fine</i> | e. go back to the sign and play until “fine” or the end |
| A ritardando | f. go back to the beginning and play until “fine” or the end |

4. Transpose this melody **DOWN** one octave. (Score 2 points for each correct note)

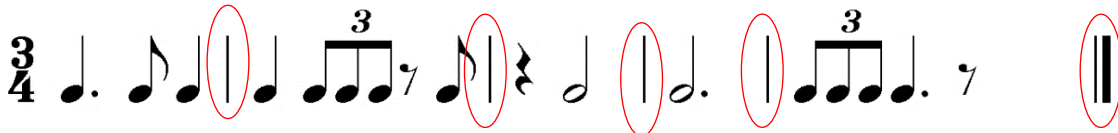


5. Transpose this melody **UP** one octave.



6. Add **bar lines**, including a **double bar line**, to make measures of 3/4 time.

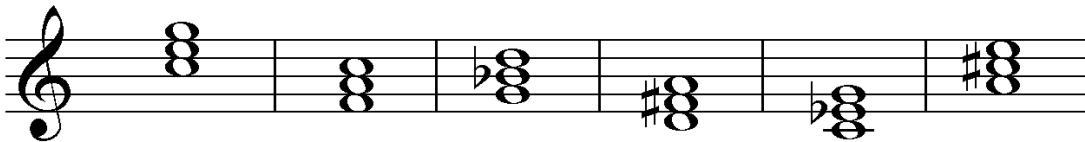
(Score 2 points for each correct bar line or double bar line; subtract 2 points for each incorrect bar line/double bar line.)



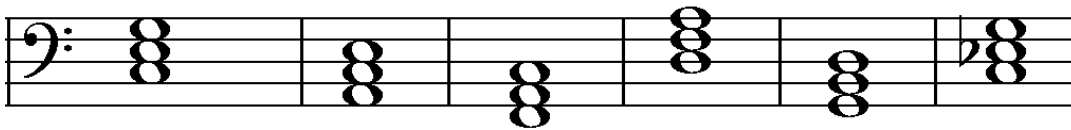
7. Add **bar lines**, including a **double bar line**, to make measures of 4/4 time.



8. Label the triads with the letter name and whether it is **Major** or **minor**. *Must include Major or minor*



Ex. C Major F Major g minor D major c minor A major



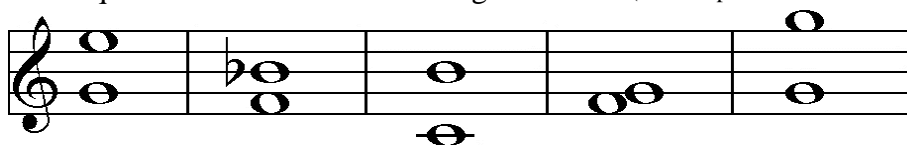
Ex. C Major A minor F Major D minor G Major C minor

9. A. How many categories of orchestral instruments are there? **4**

B. Name the categories of orchestral instruments *winds is an acceptable answer*

Strings, woodwinds, brass, and percussion

10. Write the requested interval **ABOVE** the given note. (Score 2 points for each correct note.)



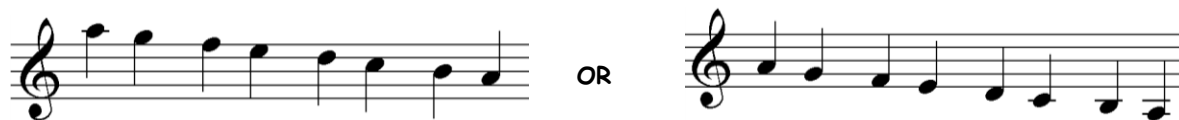
M6 P4 M7 M2 P8

Accept either harmonic intervals-as shown here, or melodic intervals - where added note is to the right of the given note. If the added note is **BELOW** the given note, the answer is incorrect and 2 points will be subtracted.



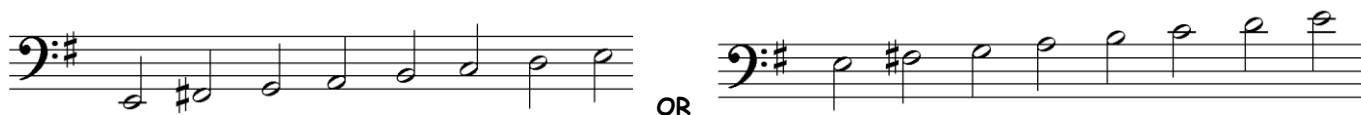
M6 M7 P4 P5 P8

11. Write a **descending** (going down) a **natural minor** scale for one octave, using **quarter notes**.



12. Write an **ascending** (going up) **natural minor** scale for one octave, using **half notes**.

Sharps may be in key signature **OR** on notes, but not both as shown below.



13. A. Write the dynamic symbols from the box in order from **LOUDEST** to **SOFTTEST**.

1. *ff* 2. *f* 3. *mf* 4. *mp* 5. *p* 6. *pp*

B. Which term from the box shows the same meaning as the order of the

dynamic symbols written above? *dim.*

C. Which term from the box shows the opposite meaning? *cresc.*

<i>cresc.</i>	<i>dim.</i>
<i>mp</i>	<i>f</i>
<i>mf</i>	<i>p</i>
<i>ff</i>	<i>pp</i>