



## Level 4 Practice Test 2017-2020

1. Write the name of the major key represented by these key signatures.

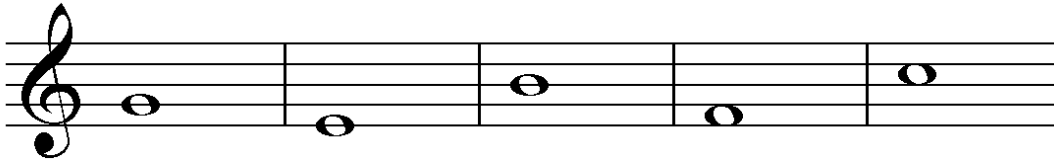


\_\_\_\_\_



\_\_\_\_\_

2. Form **triads** above each of these notes.



3. Choose the words from the box to match the dynamic symbol with its meaning.

*dim.* \_\_\_\_\_

*f* \_\_\_\_\_

*p* \_\_\_\_\_

*mf* \_\_\_\_\_

*mp* \_\_\_\_\_

*cresc.* \_\_\_\_\_

- |                  |
|------------------|
| loud             |
| soft             |
| gradually louder |
| gradually softer |
| moderately loud  |
| moderately soft  |

4. These measures are incomplete. Add **one REST** to complete each measure in **3/4 time**.





11. Write an **ENHARMONIC** note next to the given note.

12. Write the letter in the space that matches the definition.

\_\_\_\_\_ *moderato*

A. tempo word meaning fast and lively

\_\_\_\_\_ *allegro*

B. > means to stress this note

\_\_\_\_\_ fermata

C. return to beginning and play until “fine” or the end

\_\_\_\_\_ accent

D. tempo word meaning walking speed

\_\_\_\_\_ *andante*

E.  $\frown$  means hold the note longer than its value

\_\_\_\_\_ *D.C. al fine*

F. tempo word meaning medium or moderate speed

13. Draw a **WHOLE** note to form the interval **ABOVE** the given note.



## Level 4 Practice Answer Key 2017–2020

1. Write the name of the major key represented by these key signatures.

D G F D D C  
G F C D F

2. Form **triads** above each of these notes.

3. Choose the words from the box to match the dynamic symbol with its meaning.

*dim.* gradually softer      *f* loud  
*p* soft      *mf* moderately loud  
*mp* moderately soft      *cresc.* gradually louder

loud
soft
gradually louder
gradually softer
moderately loud
moderately soft

4. These measures are incomplete. Add **one REST** to complete each measure in **3/4 time**.

5. These measures are incomplete. Add **one REST** to complete each measure in **4/4 time**.

6. Add **bar lines** to make this group of notes fit into measures of **4/4 time**; add a **double bar line**.

7. Add **bar lines** to make this group of notes fit into measures of **3/4 time**; add a **double bar line**.

8. Write a one octave **D major scale** going **up** using **quarter notes**. Be sure stems are placed in the correct direction. *Any octave is acceptable. Accept either key signature or accidental, but not both*

9. Write a one octave **D major scale** going **up** using **half notes**. Be sure stems are placed in the correct direction. *Any octave is acceptable. Accept either key signature or accidental, but not both*

10. Name these notes on ledger lines. **Notice the clef sign.** (Score 1 point for each correct answer.)

E C D E C

A B B C A

A A C B B

D F C E D

11. Write an **ENHARMONIC** note next to the given note.

12. Write the letter in the space that matches the definition.

- |  |   |
|--|---|
| <p><b>F</b> <i>moderato</i></p> <p><b>A</b> <i>allegro</i></p> <p><b>E</b> fermata</p> <p><b>B</b> accent</p> <p><b>D</b> <i>andante</i></p> <p><b>C</b> <i>D.C. al fine</i></p> | <p>A. tempo word meaning fast and lively</p> <p>B. &gt; means to stress this note</p> <p>C. return to beginning and play until “fine” or the end</p> <p>D. tempo word meaning walking speed</p> <p>E. ◡ means hold the note longer than its value</p> <p>F. tempo word meaning medium or moderate speed</p> |
|--|---|

13. Draw a **WHOLE** note to form the interval **ABOVE** the given note.