



Level 3 Practice Test 2017-2020

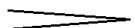
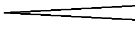
1. Identify the following intervals as either whole steps or half steps.

Use "W" for whole step or "H" for half step for each measure.





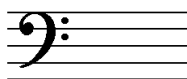
2. Choose a word from the box that completes the chart. Each symbol will have two answers from the box.

	Name of symbol:	It means:
	_____	_____
<i>p</i>	_____	_____
<i>f</i>	_____	_____
	_____	_____
<i>rit.</i>	_____	_____

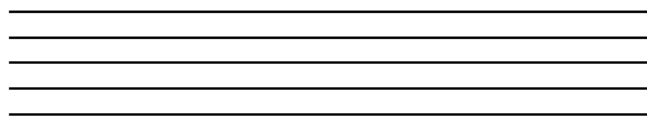
crescendo
diminuendo
forte
piano
ritardando

loud
soft
gradually louder
gradually softer
gradually slower

3. Write the letter name of the major key represented by these key signatures.

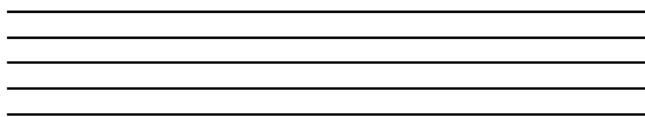


4. Draw a **TREBLE CLEF** on the staff, then write **HALF NOTES** over **EACH** of the letter names. Stems must be placed correctly.



F B D A C

Draw a **BASS CLEF** on the staff, then write **QUARTER NOTES** over **EACH** of the letter names.



C A G E D

5. Write the requested **triad** for each example.



C Major



G Major



F Major



C Major

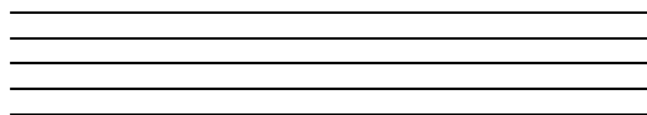
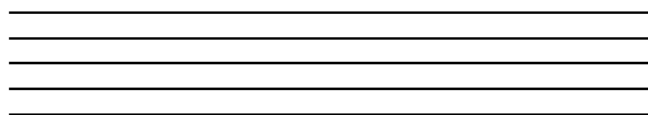


F Major

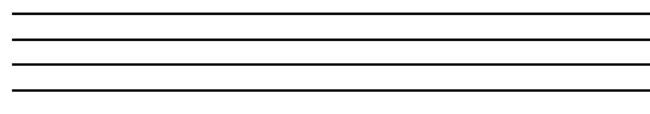
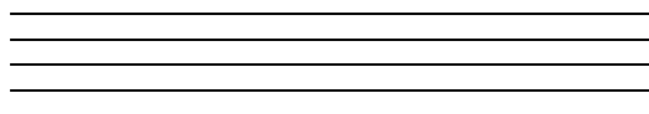


G Major

6. Draw a **TREBLE CLEF** and then using **HALF NOTES**, write a one octave **F Major and G Major** scale. Stems must be placed correctly.



7. Draw a **BASS CLEF** and then using **WHOLE NOTES**, write a one octave **F Major and G Major** scale.



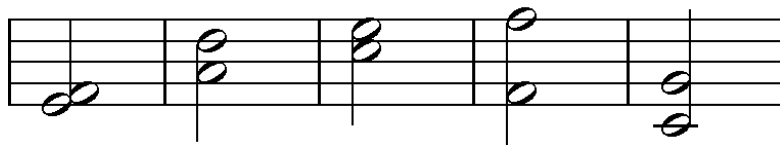
8. Separate the following notes into measures by adding **bar lines** and **double bar line** in **4/4** time.

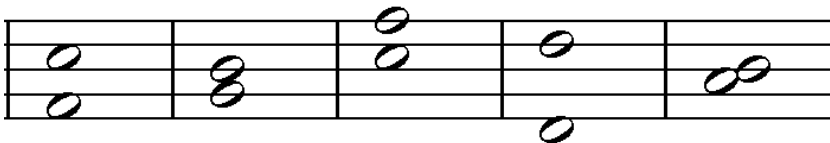


9. Separate the following notes into measures by adding **bar lines** and **double bar line** in **3/4** time



10. Identify the following intervals.





11. Write the letter in the space that matches the definition.

_____ a curved line connecting two notes on different lines and/or spaces

A. legato

_____ short, detached

B. triad

_____ smooth, connected

C. 8^{va}

_____ play an octave higher or lower than written

D. slur

_____ a three-note chord

E. staccato

12. Add **ONE REST** to make each measure complete in **3/4** time.





Level 3 Practice Answer Key 2017-2020

1. Identify the following intervals as either whole steps or half steps.

Use "W" for whole step or "H" for half step for each measure.



H W W W H



H W H W H

2. Choose a word from the box that completes the chart. Each symbol will have two answers from the box.



Name of symbol:

diminuendo

It means:

gradually softer

p

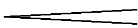
piano

soft

f

forte

loud



crescendo

gradually louder

rit.

ritardando

gradually slower

<i>crescendo</i>
<i>diminuendo</i>
<i>forte</i>
<i>piano</i>
<i>ritardando</i>

loud
soft
gradually louder
gradually softer
gradually slower

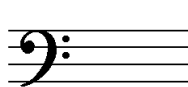
3. Write the letter name of the major key represented by these key signatures.



F



G



C



F



C



G



F

4. Draw a **TREBLE CLEF** on the staff, then write **HALF NOTES** over **EACH** of the letter names. Stems must be placed correctly. **Either note is acceptable**

F B D A C

Draw a **BASS CLEF** on the staff, then write **QUARTER NOTES** over **EACH** of the letter names.

C A G E D

5. Write the requested **triad** for each example.

C Major G Major F Major C Major F Major G Major

6. Draw a **TREBLE CLEF** in each of the staves below. Using **HALF NOTES**, write a one octave **F Major** and **G Major** scale. Stems must be placed correctly. **Accept either key signature or accidental, but not both**

7. Draw a **BASS CLEF** and then using **WHOLE NOTES**, write a one octave **F Major** and **G Major** scale. **Accept either key signature or accidental, but not both**

8. Separate the following notes into measures by adding **bar lines** and **double bar line** in **4/4** time.

9. Separate the following notes into measures by adding **bar lines** and **double bar line** in **3/4** time

10. Identify the following intervals.

2nd 4th 3rd 8th /octave 5th

5th 3rd 4th 8th /octave 2nd

11. Write the letter in the space that matches the definition.

- | | | |
|----------|---|--------------------|
| D | a curved line connecting two notes on different lines and/or spaces | A. legato |
| E | short, detached | B. triad |
| A | smooth, connected | C. 8 ^{va} |
| C | play an octave higher or lower than written | D. slur |
| B | a three-note chord | E. staccato |

12. Add **ONE REST** to make each measure complete in 3/4 time.