
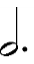







## Level 2 Practice Test 2017-2020

1. Choose a word from the box that identifies the note or rest. Write the number of beats each receives in **4/4 time**.

	_____	gets _____ beats
	_____	gets _____ beats
	_____	gets _____ beats
	_____	gets _____ beat
	_____	gets _____ beats


- quarter rest
- half rest
- whole note
- whole rest
- dotted half note


2. Write the correct beats/counts under each note for counting the measures below. Note the **3/4** time signature.

**3/4** 

**3/4** 



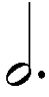
3. Write the correct letter name for **EACH** note below.

  
\_\_\_\_\_

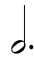
  
\_\_\_\_\_

4. A. Write the **number of beats** each note or rest receives in **4/4 time**.

 = \_\_\_\_\_     = \_\_\_\_\_     = \_\_\_\_\_     = \_\_\_\_\_

 = \_\_\_\_\_     = \_\_\_\_\_     = \_\_\_\_\_

B. The name of this note,  is a \_\_\_\_\_ note.

The name of this note,  is a \_\_\_\_\_ note.

The name of this rest,  is a \_\_\_\_\_ rest

- |             |
|-------------|
| quarter     |
| half        |
| whole       |
| dotted half |

5. Circle the measures with intervals of a **SECOND**.

6. Draw a **FLAT** on the staff in front of each note. (Be careful to draw flat on the correct line or space.)

7. Draw a **SHARP** on the staff in front of each note. (Be careful to draw sharp on the correct line or space.)

8. Write the correct beats/counts under each note for counting the measures below. Note the **4/4** time signature.

$\frac{4}{4}$  ||

$\frac{4}{4}$  ||

9. Circle the measures with intervals of a **THIRD**.



10. Match the musical signs with the definition by writing the letter in the space provided.

\_\_\_\_\_ tied notes      \_\_\_\_\_ slur

\_\_\_\_\_ bar line      \_\_\_\_\_ Grand staff

\_\_\_\_\_ repeat

A.



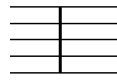
B.



C.



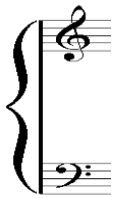
D.



E.



A.



\_\_\_\_\_ barline

\_\_\_\_\_ grand staff

\_\_\_\_\_ measure

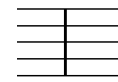
\_\_\_\_\_ slur

\_\_\_\_\_ tie

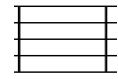
C.



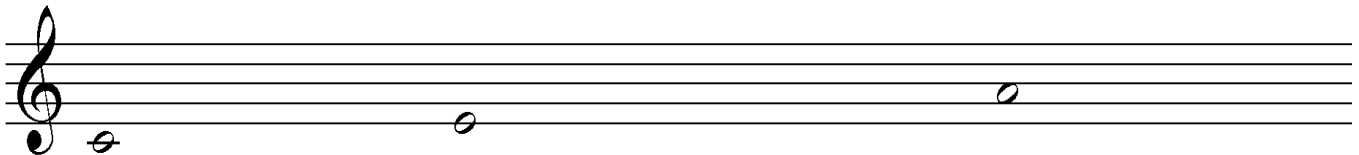
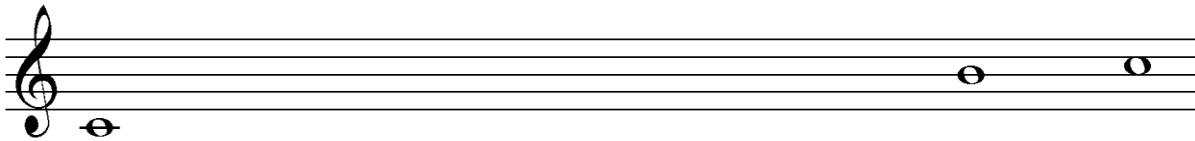
D.



E.



11. Add **five whole notes** to complete this C major scale.










# National Federation of Music Clubs - Festival Theory Test

## Level 2 Practice Answer Key 2017-2020

1. Choose a word from the box that identifies the note or rest. Write the number of beats each receives in **4/4 time**.

-  **half rest** gets **2** beats
-  **dotted half note** gets **3** beats
-  **whole note** gets **4** beats
-  **quarter rest** gets **1** beat
-  **whole rest** gets **4** beats

- quarter rest
- half rest
- whole note
- whole rest
- dotted half note

2. Write the correct beats/counts under each note for counting the measures below. Note the **3/4** time signature.

**3/4** 

1 2 3    1 2 3    1 2 3    1 2 3    1 2 3  
 1 1 1    1 1 2    1 2 3    1 1 1    1 2 1

either method of counting is acceptable

**3/4** 

1 2 3    1 2 3    1 2 3    1 2 3    1 2 3  
 1 1 1    1 2 1    1 2 3    1 1 1    1 2 3

3. Write the correct letter name for **EACH** note below.



**E    A    C    G    D    F    B    D    E    F**



**E    B    G    C    E    A    D    F    D    F**

4. A. Write the **number of beats** each note or rest receives in **4/4 time**.

- |             |
|-------------|
| quarter     |
| half        |
| whole       |
| dotted half |

B. The name of this note, is a **whole** note.

The name of this note, is a **dotted half** note.

The name of this rest, is a **half** rest.

5. Circle the measures with intervals of a **SECOND**.

6. Draw a **FLAT** on the staff in front of each note. (Be careful to draw flat on the correct line or space.)

7. Draw a **SHARP** on the staff in front of each note. (Be careful to draw sharp on the correct line or space.)

8. Write the correct beats/counts under each note for counting the measures below. Note the **4/4** time signature.  
*either manner of counting is acceptable*

1 2 3 4    1 2 3 4    1 2 3 4    1 2 3 4    1 2 3 4  
 1 2 1 1    1 1 1 1    1 2 3 4    1 2 1 2    1 2 3 1

1 2 3 4    1 2 3 4    1 2 3 4    1 2 3 4    1 2 3 4  
 1 1 1 1    1 2 3 1    1 1 1 2 1    1 2 3 4    1 2 1 2

9. Circle the measures with intervals of a **THIRD**.



10. Match the musical signs with the definition by writing the letter in the space provided.

**A** tied notes

**E** slur

A.



B.



C.

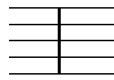


**D** bar line

**C** Grand staff

**B** repeat

D.



E.



A.



**D** barline

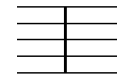
**A** grand staff

C.



**E** measure

D.



**C** slur

B.



**B** tie

E.



11. Add **five whole notes** to complete this C major scale.

