



## Level 1 Practice Test 2017-2020

1. Fill in the blanks with the missing letter to complete the musical alphabet from low to high.

B \_\_ DEF    GA \_\_ CD    \_\_ DEFG    E \_\_ GAB    FGAB \_\_

A \_\_ CDE    CDE \_\_ G    DE \_\_ GA    GAB \_\_ D    CDE \_\_ G

2. Draw **1 HALF NOTE** in each measure in **different spaces**.

Write only **one note** in each measure!!


Draw **1 WHOLE NOTE** in each measure on **different lines**.

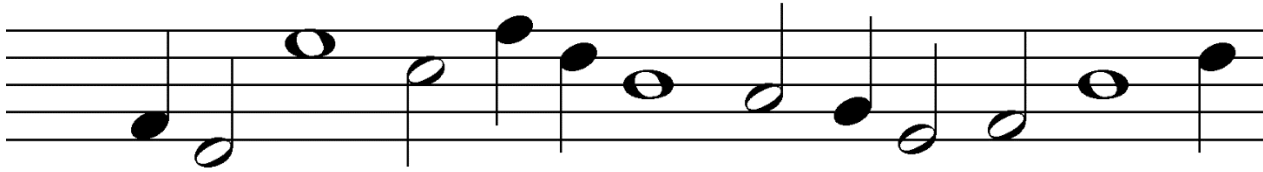

Draw **1 QUARTER NOTE** in each measure in **different spaces**.


Draw **1 HALF NOTE** in each measure on **different lines**.


3. Circle **only** the **QUARTER** notes.



4. Circle **only** the **HALF** notes.



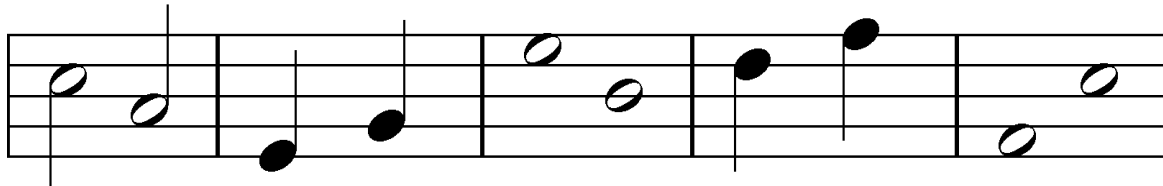
5. Circle **only** the **WHOLE** notes.



6. Circle **ONLY** the notes in **SPACES**.



7. Circle the **HIGHEST** note in each measure.



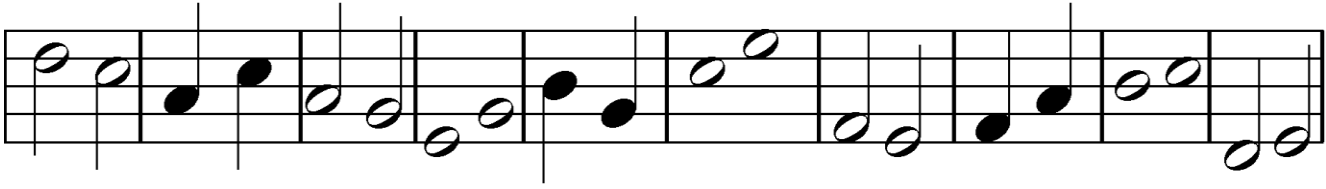
8. Circle the **LOWEST** note in each measure.



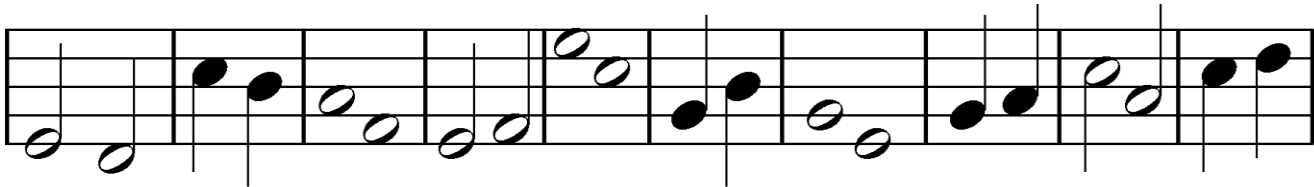
9. Circle **ONLY** the notes on **LINES**.



10. Circle **ONLY** the measures with notes that **SKIP** up or down.



11. Circle **ONLY** the measures with notes that **STEP** up or down.



12. Write the letter in the space that matches the definition.

\_\_\_\_\_ bass clef

\_\_\_\_\_ play or sing softly

\_\_\_\_\_ treble clef

\_\_\_\_\_ play or sing loudly

\_\_\_\_\_ staff



B. *f*

C.

D. *p*

E.

13. Write the letter in the space that matches the notes in the right column.

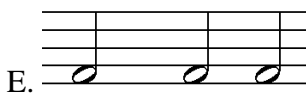
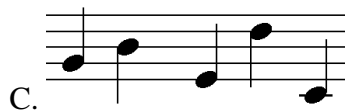
\_\_\_\_\_ Notes stepping up

\_\_\_\_\_ Notes skipping up

\_\_\_\_\_ Repeated notes

\_\_\_\_\_ Notes on lines

\_\_\_\_\_ Notes stepping down





## Level 1 Answer Key 2017-2020

1. Fill in the blanks with the missing letter to complete the musical alphabet from low to high.

**B** C D E F      G A **B** C D      **C** D E F G      E **F** G A B      F G A **B** C

A **B** C D E      C D E **F** G      D E **F** G A      G A B **C** D      C D E **F** G

2. Draw 1 **HALF NOTE** in each measure in **different spaces**.

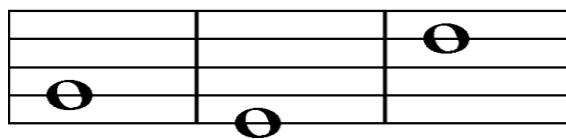
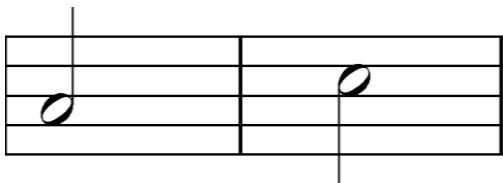
Write only **one note** in each measure!!

Draw 1 **WHOLE NOTE** in each measure on **different lines**.

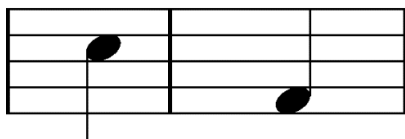
Stem direction does not need to be correct in this level; however, down stems need to be on the left and up stems need to be on the right of the note head.

----- ANY SPACE -----

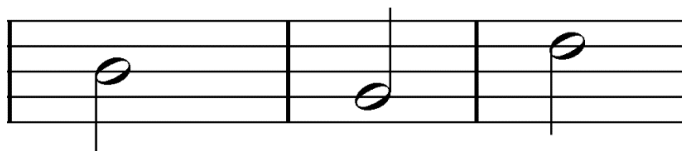
----- ANY LINE -----



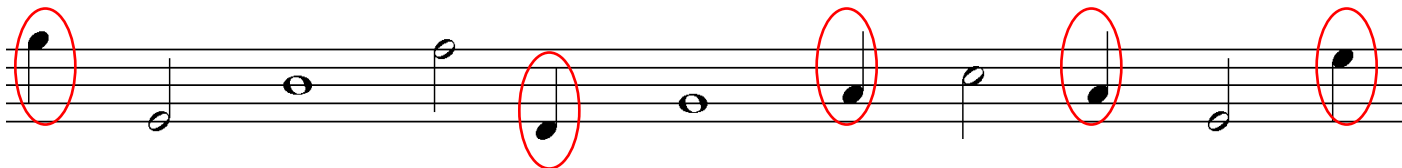
Draw 1 **QUARTER NOTE** in each measure in **different spaces**.



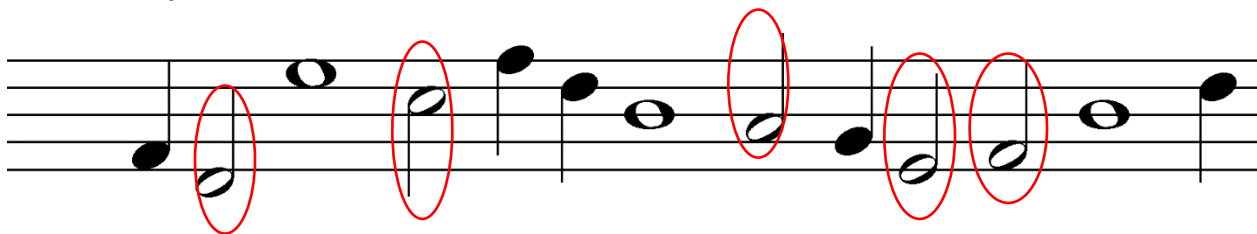
Draw 1 **HALF NOTE** in each measure on **different lines**.



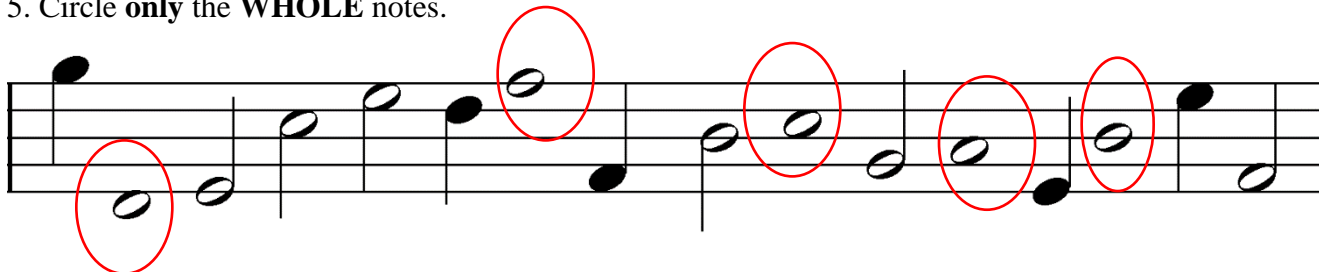
3. Circle **only** the **QUARTER** notes.



4. Circle **only** the **HALF** notes.



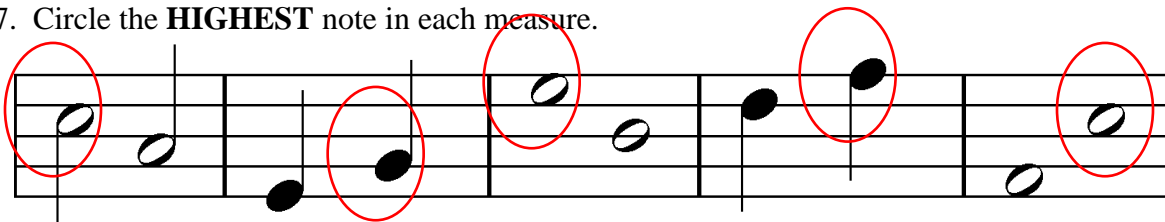
5. Circle **only** the **WHOLE** notes.



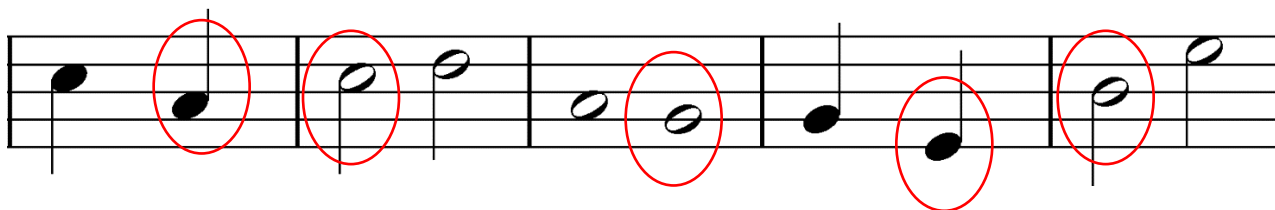
6. Circle **ONLY** the notes in **SPACES**.



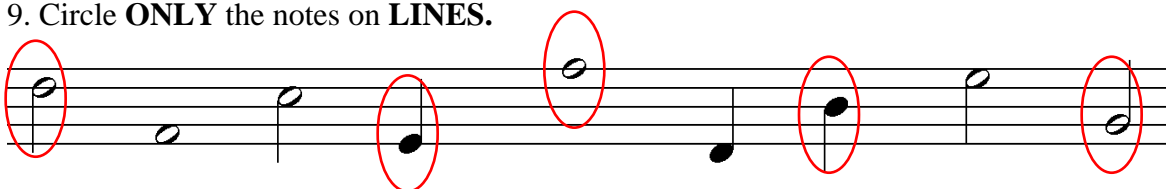
7. Circle the **HIGHEST** note in each measure.



8. Circle the **LOWEST** note in each measure.



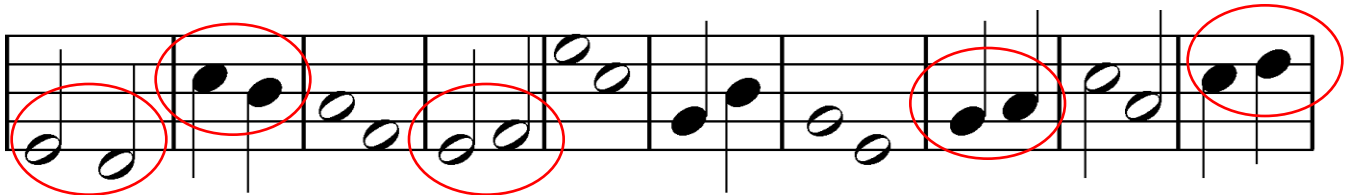
9. Circle **ONLY** the notes on **LINES**.



10. Circle **ONLY** the measures with notes that **SKIP** up or down.



11. Circle **ONLY** the measures with notes that **STEP** up or down.



12. Write the letter in the space that matches the definition.

**E** bass clef

**D** play or sing softly

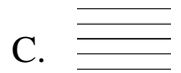
**A** treble clef

**B** play or sing loudly

**C** staff



B. ***f***



D. ***p***

E.

13. Write the letter in the space that matches the notes in the right column.

**D** Notes stepping up

**B** Notes skipping up

**E** Repeated notes

**C** Notes on lines

**A** Notes stepping down

