

5. A. Write the letter in the space that matches the definition.

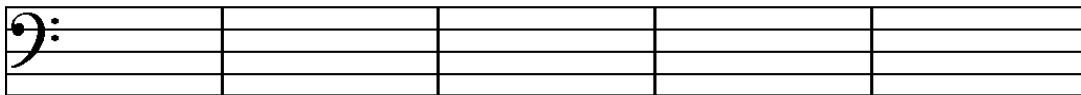
- | | |
|--------------------------|---|
| _____ two-part invention | a. contrapuntal piece for keyboard |
| _____ fugue | b. short, introductory piece usually with one musical idea |
| _____ minuet | c. French dance in moderate 3/4 time |
| _____ prelude | d. imitative piece with subject, answer, and countersubject |

B. Write the letter in the space that best matches the composer description.

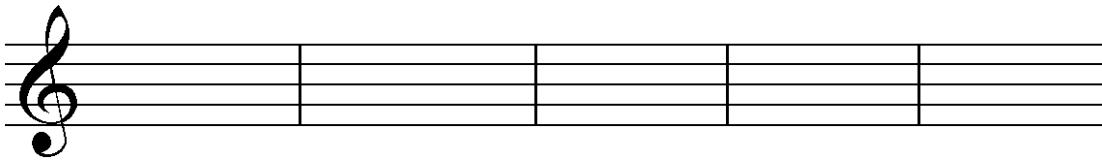
- | | |
|-----------------|---|
| _____ Vivaldi | a. English/German composer of <i>Messiah</i> and <i>Water Music</i> |
| _____ Scarlatti | b. Italian violinist and orchestral composer of <i>Four Seasons</i> |
| _____ Handel | c. German, master composer of <i>Well-tempered Clavier</i> and church music |
| _____ Bach | d. Italian harpsichordist and composer of keyboard sonatas |

C. What are the approximate dates of the Baroque period of music history? _____ to _____

6. Write the requested inversion of each triad.

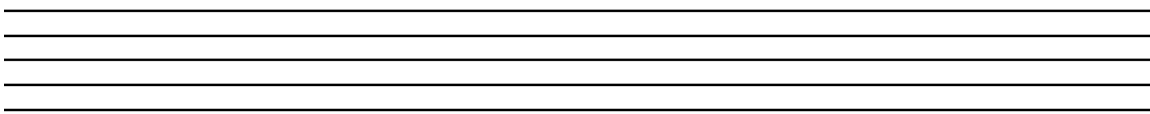


F Major 1st g minor 2nd D Major 1st C Major 2nd a minor 2nd

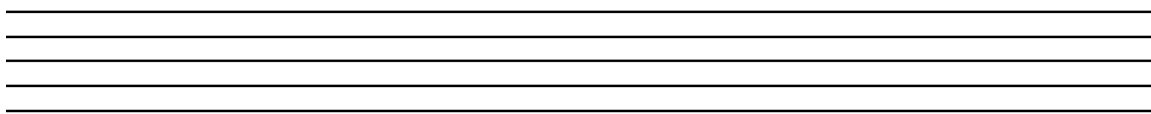


C minor 1st g minor 1st A Major 1st d minor 2nd F Major 2nd

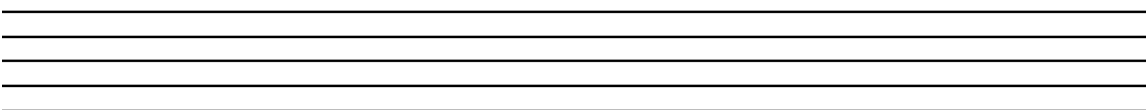
7. Draw a bass or treble clef, then write a **descending d natural minor** scale, using quarter notes.



8. Draw a bass or treble clef, then write an **ascending A Major** scale. Any note value is acceptable.



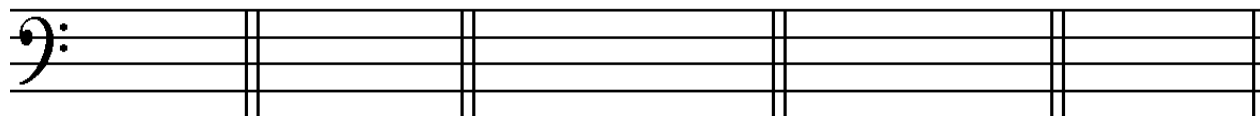
9. Draw a bass or treble clef, then write an **ascending E Major** scale using **quarter notes**.



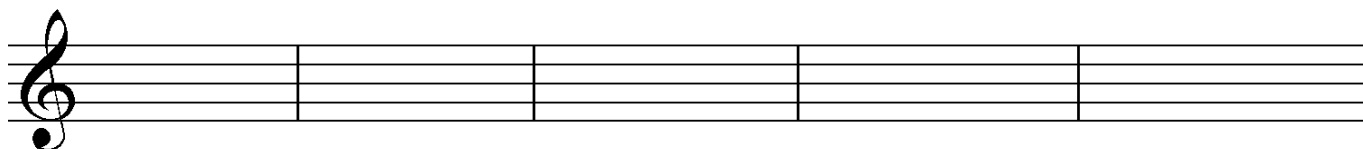
10. Choose the item number from the list on the right that best defines the given term.

- | | |
|--------------------------|--|
| _____ reed | 1. fast, lively |
| _____ concertmaster | 2. conductor's stick |
| _____ baton | 3. keyboard instrument |
| _____ <i>accelerando</i> | 4. thin strip of cane or wood used in woodwind instruments |
| _____ <i>adagio</i> | 5. slowly |
| _____ <i>vivace</i> | 6. gradually get faster |
| _____ conductor | 7. orchestra or choir director |
| _____ harpsichord | 8. first violinist |

11. Write the indicated key signatures.

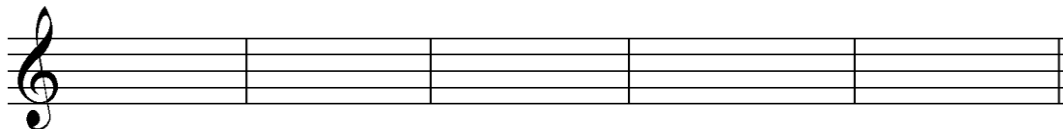


- A Major d minor F Major b minor E Major



- E Major b minor d minor A Major F Major

12. Transpose this melody to **C Major**.



13. Transpose this melody to the **treble clef**.

