

Level 5 Practice Answer Key 2017-2020

1. Write the indicated key signatures.

e minor G Major F Major D Major a minor

G Major D Major F Major a minor e minor

2. A. Write the dynamic symbols from the box in order from **SOFTEST** to **LOUDEST**.

1. *pp* 2. *p* 3. *mp* 4. *mf* 5. *f* 6. *ff* .

B. Which term from the box shows the same meaning as the order of the dynamic symbols written above? *cresc.*

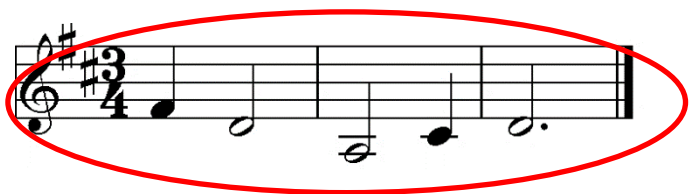
C. Which term from the box shows the opposite meaning? *dim.*

<i>cresc.</i>	<i>dim.</i>
<i>mp</i>	<i>f</i>
<i>mf</i>	<i>p</i>
<i>ff</i>	<i>pp</i>

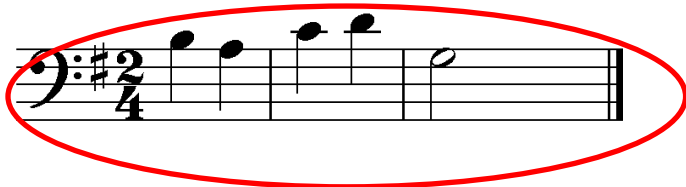
3. Match the definition to the correct term in the first column.

- | | |
|------------------------------|--|
| B phrase | a. gradually slower |
| D <i>a tempo</i> | b. musical sentence |
| F D.C. <i>al fine</i> | c. broken chord |
| C arpeggio | d. return to original speed |
| E D.S. <i>al fine</i> | e. go back to the sign and play until “fine” or the end |
| A ritardando | f. go back to the beginning and play until “fine” or the end |

4. Transpose this melody **DOWN** one octave. (Score 2 points for each correct note)

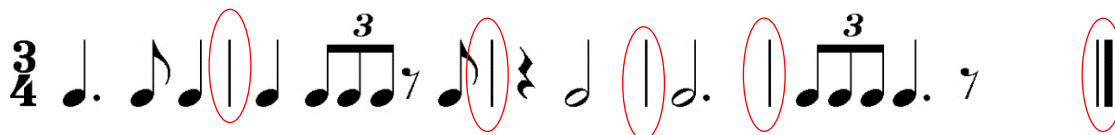


5. Transpose this melody **UP** one octave.



6. Add **bar lines**, including a **double bar line**, to make measures of $\frac{3}{4}$ time.

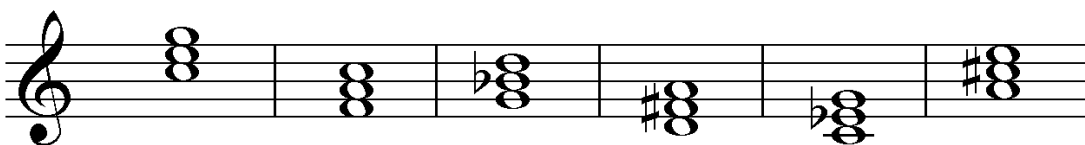
(Score 2 points for each correct bar line or double bar line; subtract 2 points for each incorrect bar line/double bar line.)



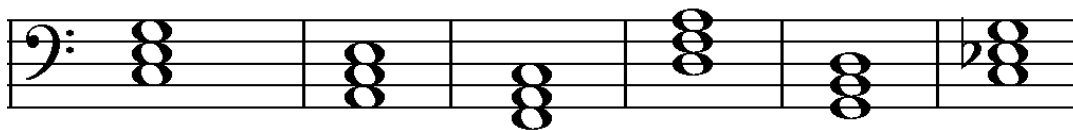
7. Add **bar lines**, including a **double bar line**, to make measures of $\frac{4}{4}$ time.



8. Label the triads with the letter name and whether it is **Major** or **minor**. *Must include Major or minor*



Ex. C Major F Major g minor D major c minor A major



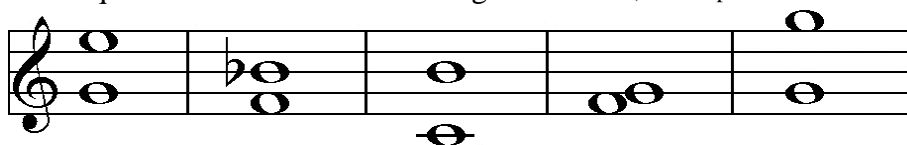
Ex. C Major A minor F Major D minor G Major C minor

9. A. How many categories of orchestral instruments are there? **4**

B. Name the categories of orchestral instruments *winds is an acceptable answer*

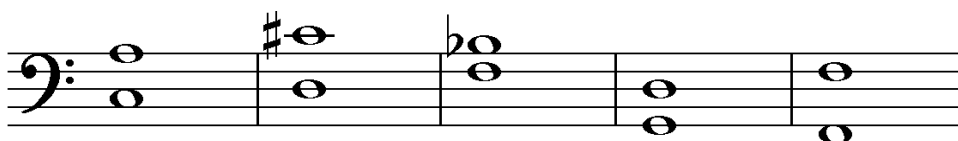
Strings, woodwinds, brass, and percussion

10. Write the requested interval **ABOVE** the given note. (Score 2 points for each correct note.)



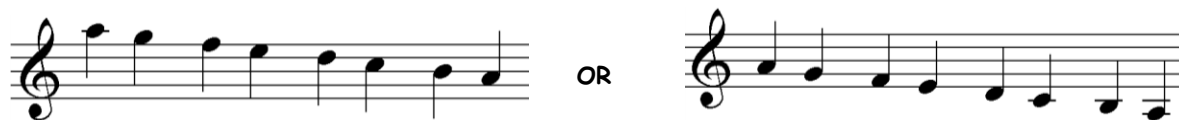
M6 P4 M7 M2 P8

Accept either harmonic intervals-as shown here, or melodic intervals - where added note is to the right of the given note. If the added note is **BELOW** the given note, the answer is incorrect and 2 points will be subtracted.



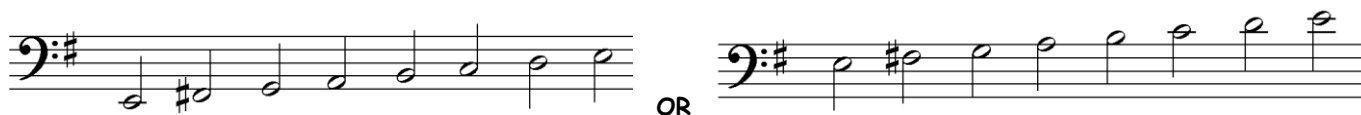
M6 M7 P4 P5 P8

11. Write a **descending** (going down) a **natural minor** scale for one octave, using **quarter notes**.



12. Write an **ascending** (going up) **natural minor** scale for one octave, using **half notes**.

Sharps may be in key signature OR on notes, but not both as shown below.



13. A. Write the dynamic symbols from the box in order from **LOUDEST** to **SOFTTEST**.

1. *ff* 2. *f* 3. *mf* 4. *mp* 5. *p* 6. *pp*

B. Which term from the box shows the same meaning as the order of the

dynamic symbols written above? *dim.*

C. Which term from the box shows the opposite meaning? *cresc.*

<i>cresc.</i>	<i>dim.</i>
<i>mp</i>	<i>f</i>
<i>mf</i>	<i>p</i>
<i>ff</i>	<i>pp</i>