



## Level 4 Practice Answer Key 2017-2020

1. Write the name of the major key represented by these key signatures.

Key signatures shown in musical notation with their corresponding letter names:

- Treble clef, two sharps: **D**
- Bass clef, one sharp: **G**
- Treble clef, one flat: **F**
- Bass clef, two sharps: **D**
- Bass clef, no sharps or flats: **C**
- Bass clef, one sharp: **G**
- Treble clef, one flat: **F**
- Bass clef, no sharps or flats: **C**
- Treble clef, two sharps: **D**
- Bass clef, one flat: **F**

2. Form **triads** above each of these notes.

Two staves of musical notation showing single notes on a five-line staff, intended for triad formation.

3. Choose the words from the box to match the dynamic symbol with its meaning.

*dim.* gradually softer      *f* loud

*p* soft      *mf* moderately loud

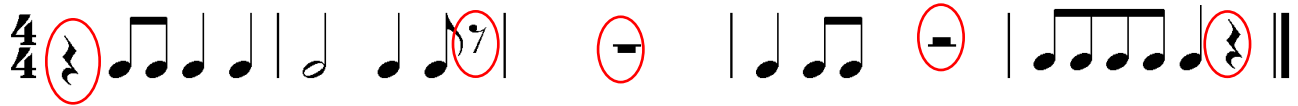
*mp* moderately soft      *cresc.* gradually louder

loud
soft
gradually louder
gradually softer
moderately loud
moderately soft

4. These measures are incomplete. Add **one REST** to complete each measure in **3/4 time**.

Four measures of musical notation in 3/4 time. The first measure has a quarter note. The second has two eighth notes. The third has a quarter note. The fourth has a quarter note. Each measure is followed by a red circle containing a '7', indicating where to add a rest.

5. These measures are incomplete. Add **one REST** to complete each measure in **4/4 time**.



6. Add **bar lines** to make this group of notes fit into measures of **4/4 time**; add a **double bar line**.



7. Add **bar lines** to make this group of notes fit into measures of **3/4 time**; add a **double bar line**.



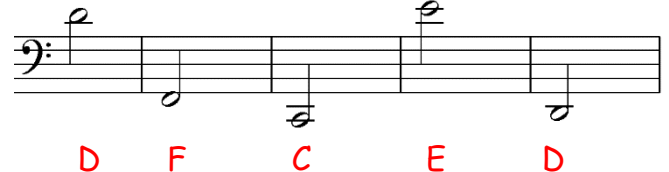
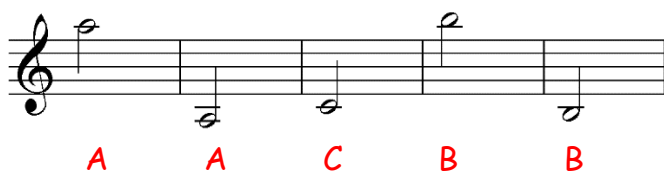
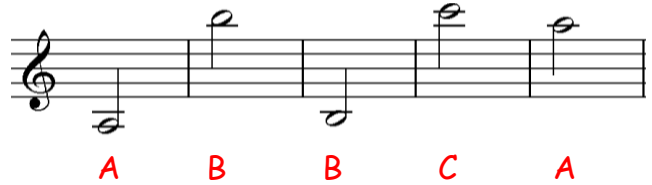
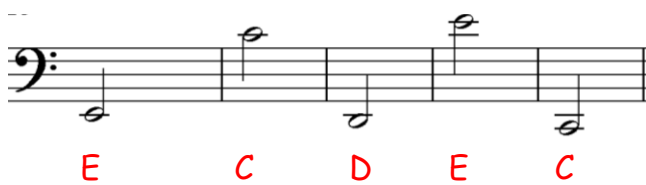
8. Write a one octave **D major scale** going **up** using **quarter notes**. Be sure stems are placed in the correct direction. **Any octave is acceptable. Accept either key signature or accidental, but not both**



9. Write a one octave **D major scale** going **up** using **half notes**. Be sure stems are placed in the correct direction. **Any octave is acceptable. Accept either key signature or accidental, but not both**



10. Name these notes on ledger lines. **Notice the clef sign.** (Score 1 point for each correct answer.)



11. Write an **ENHARMONIC** note next to the given note.

12. Write the letter in the space that matches the definition.

**F** *moderato*

**A** *allegro*

**E** fermata

**B** accent

**D** *andante*

**C** *D.C. al fine*

A. tempo word meaning fast and lively

B. > means to stress this note

C. return to beginning and play until “fine” or the end

D. tempo word meaning walking speed

E. ◡ means hold the note longer than its value

F. tempo word meaning medium or moderate speed

13. Draw a **WHOLE** note to form the interval **ABOVE** the given note.