



Level 3 Practice Test 2017-2020

1. Identify the following intervals as either whole steps or half steps.

Use "W" for whole step or "H" for half step for each measure.



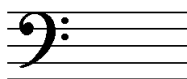


2. Choose a word from the box that completes the chart. Each symbol will have two answers from the box.

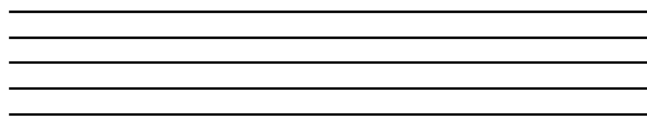
	Name of symbol:	It means:
	_____	_____
<i>p</i>	_____	_____
<i>f</i>	_____	_____
	_____	_____
<i>rit.</i>	_____	_____

- crescendo*
- diminuendo*
- forte*
- piano*
- ritardando*
- *****
- loud
- soft
- gradually louder
- gradually softer
- gradually slower

3. Write the letter name of the major key represented by these key signatures.

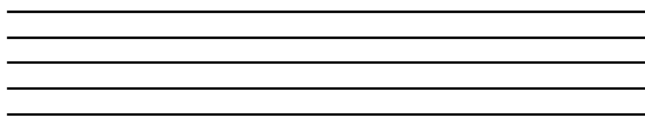


4. Draw a **TREBLE CLEF** on the staff, then write **HALF NOTES** over **EACH** of the letter names. Stems must be placed correctly.



F B D A C

Draw a **BASS CLEF** on the staff, then write **QUARTER NOTES** over **EACH** of the letter names.



C A G E D

5. Write the requested **triad** for each example.



C Major



G Major



F Major



C Major

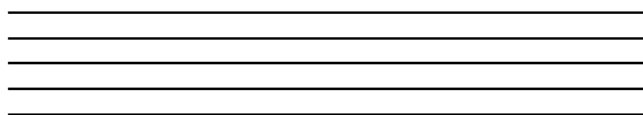
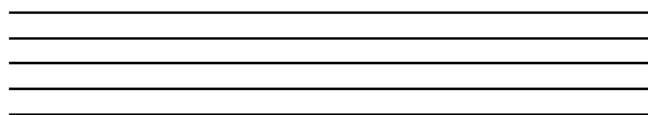


F Major

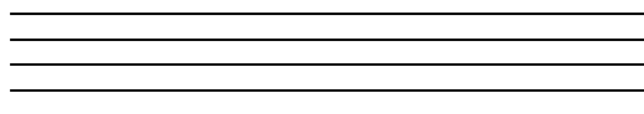
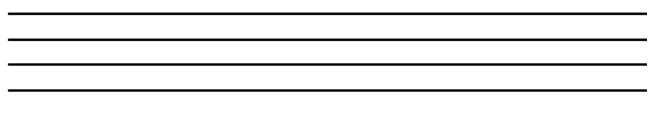


G Major

6. Draw a **TREBLE CLEF** and then using **HALF NOTES**, write a one octave **F Major and G Major** scale. Stems must be placed correctly.



7. Draw a **BASS CLEF** and then using **WHOLE NOTES**, write a one octave **F Major and G Major** scale.



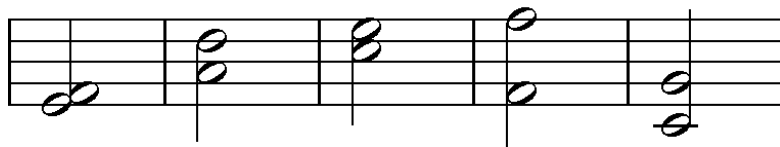
8. Separate the following notes into measures by adding **bar lines** and **double bar line** in **4/4** time.

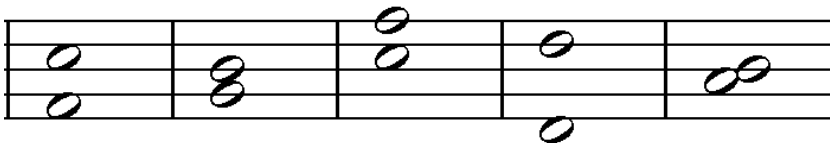


9. Separate the following notes into measures by adding **bar lines** and **double bar line** in **3/4** time



10. Identify the following intervals.





11. Write the letter in the space that matches the definition.

_____ a curved line connecting two notes on different lines and/or spaces

A. legato

_____ short, detached

B. triad

_____ smooth, connected

C. 8^{va}

_____ play an octave higher or lower than written

D. slur

_____ a three-note chord

E. staccato

12. Add **ONE REST** to make each measure complete in **3/4** time.

