



Level 1 Answer Key 2017-2020

1. Fill in the blanks with the missing letter to complete the musical alphabet from low to high.

B C D E F G A **B** C D **C** D E F G E **F** G A B F G A **B** C

A **B** C D E C D E **F** G D E **F** G A G A B **C** D C D E **F** G

2. Draw 1 **HALF NOTE** in each measure in **different spaces**.

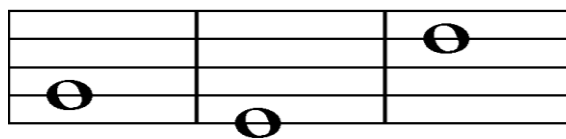
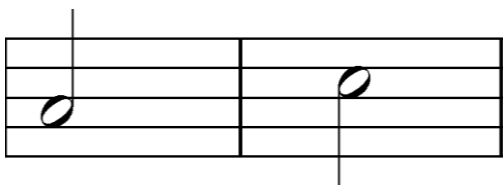
Write only **one note** in each measure!!

Draw 1 **WHOLE NOTE** in each measure on **different lines**.

Stem direction does not need to be correct in this level; however, down stems need be on the left and up stems need to be on the right of the note head.

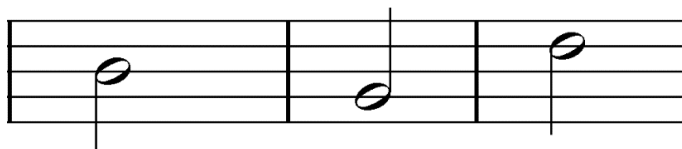
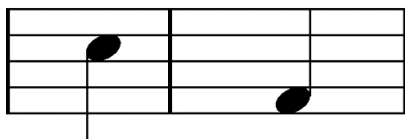
----- ANY SPACE -----

----- ANY LINE -----

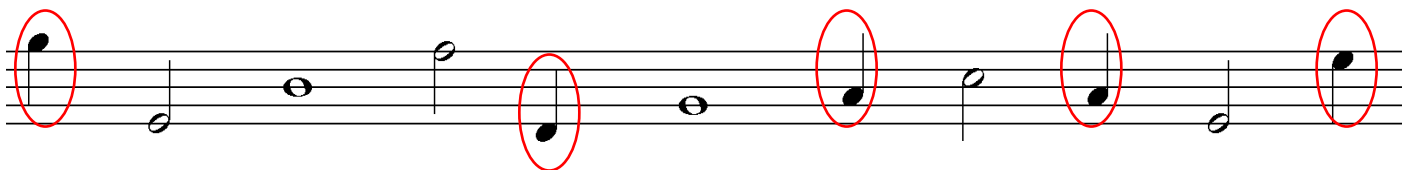


Draw 1 **QUARTER NOTE** in each measure in **different spaces**.

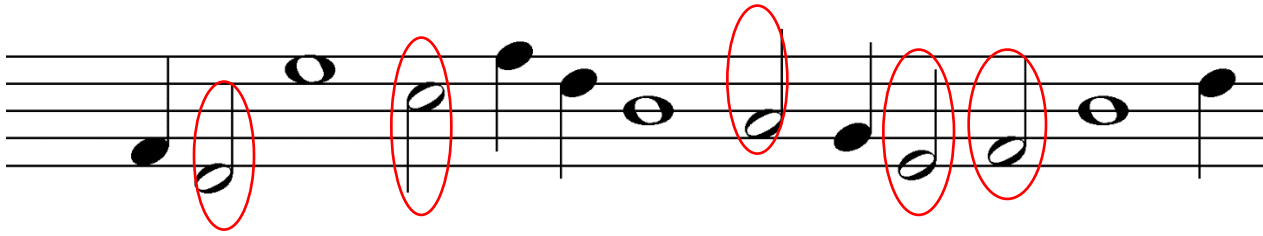
Draw 1 **HALF NOTE** in each measure on **different lines**.



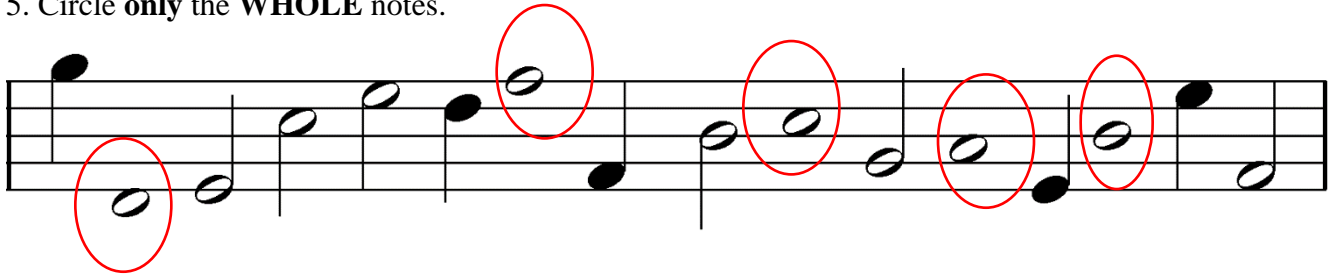
3. Circle **only** the **QUARTER** notes.



4. Circle **only** the **HALF** notes.



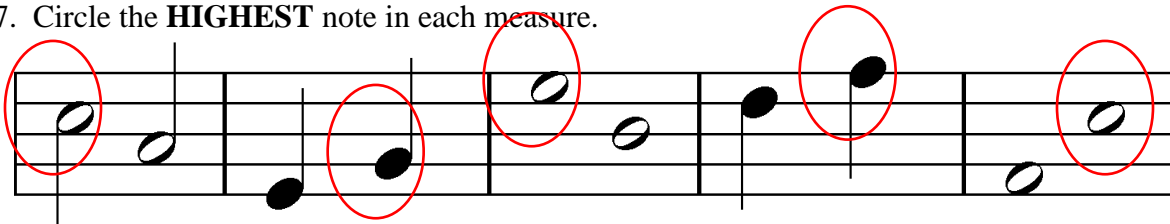
5. Circle **only** the **WHOLE** notes.



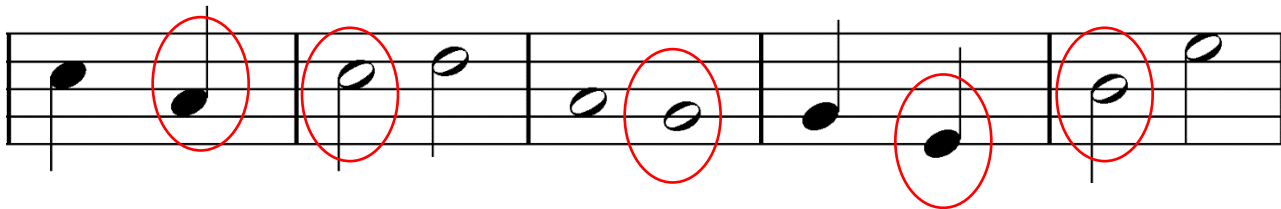
6. Circle **ONLY** the notes in **SPACES**.



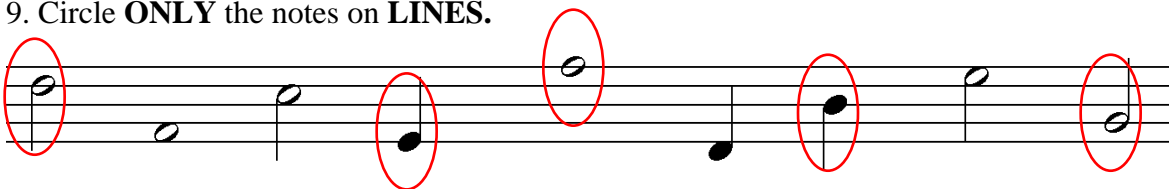
7. Circle the **HIGHEST** note in each measure.



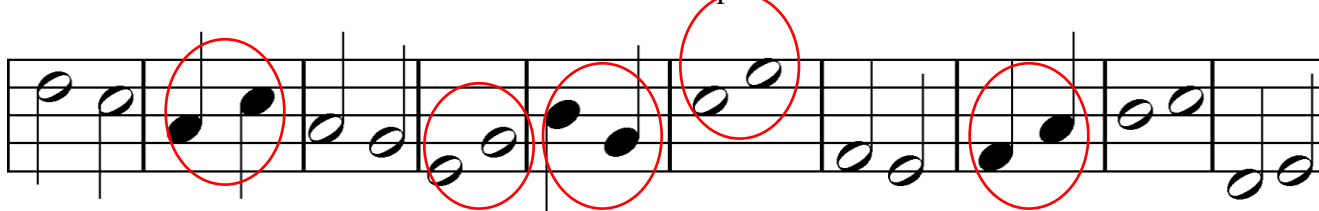
8. Circle the **LOWEST** note in each measure.



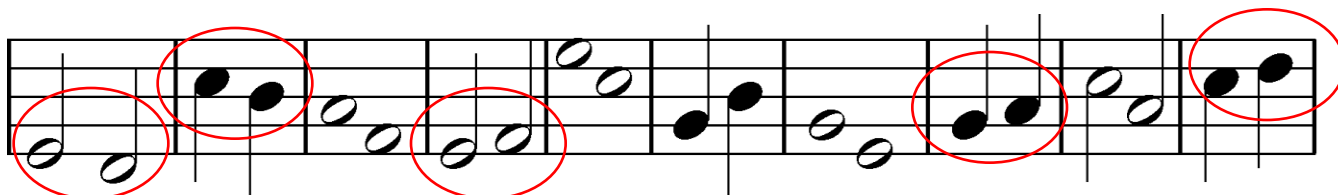
9. Circle **ONLY** the notes on **LINES**.



10. Circle **ONLY** the measures with notes that **SKIP** up or down.



11. Circle **ONLY** the measures with notes that **STEP** up or down.



12. Write the letter in the space that matches the definition.

E bass clef

D play or sing softly

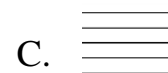
A treble clef

B play or sing loudly

C staff



B. ***f***



D. ***p***

E.

13. Write the letter in the space that matches the notes in the right column.

D Notes stepping up

B Notes skipping up

E Repeated notes

C Notes on lines

A Notes stepping down

