

****Practice Test****
FESTIVAL THEORY TEST
 (Each item number is worth ten points)

Name Answer Key

Rating _____
 (Superior 90-100, Excellent 80-89.5, Satisfactory 70-79.5,
 Fair 60-69.5, Needs Improvement <60)

1. Complete this melody using sequence.
 (Score 5 points for each correctly written measure; partial credit for partially correct measures)

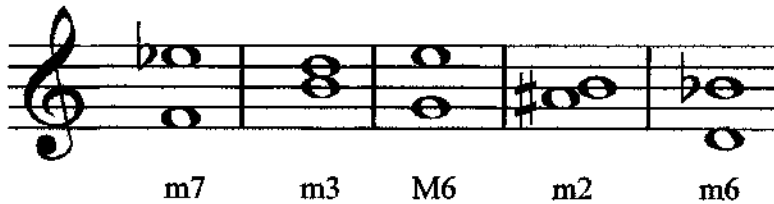


2. Write the indicated key signatures and the tonic note.
 (Score 1 point for each correct key signature, 1 point for each correct tonic note)

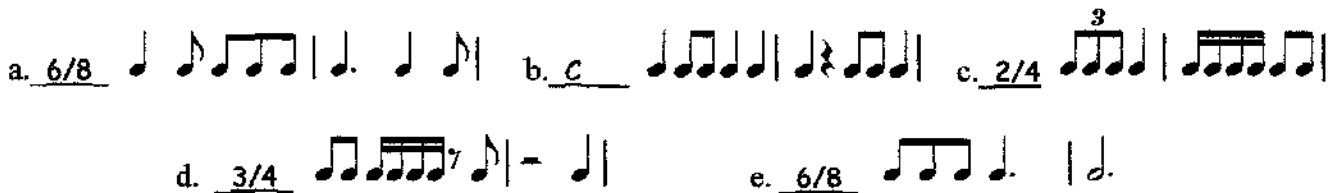


Ex. e minor c minor E Major f# minor A b Major g minor

3. Write a note above the given note to form the indicated interval. (Score 2 points for each correct interval)



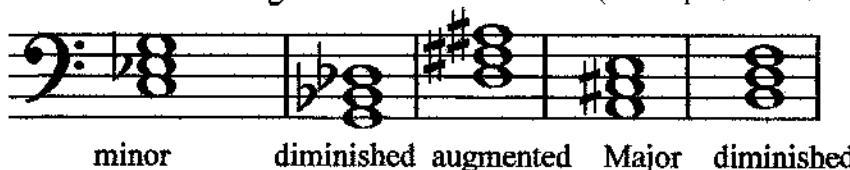
4. Write the time signature represented by these rhythms. Select from the following: 3/4, 6/8, 2/4, C



5. Identify these woodwind instruments: (Score 2 points for each correct identification)

- a. double reed, higher pitch range, exotic sound oboe
- b. single reed, orchestra and band member, mellow tone color clarinet OR bass clarinet
- c. single reed, brass body, band and jazz essential saxophone
- d. metal, no reed, held horizontally flute
- e. double reed, orchestra member, lower pitch range bassoon OR contrabassoon

6. Write root position triads above the given notes as indicated. (Score 2 points for each correct triad)



minor diminished augmented Major diminished

****Practice Test** Answer Key**

7. Transpose this melody to C Major.

(Score 2 points for each correct measure. Score partial credit -- .5, 1, 1.5 -- for partially correct measures)



8. A. What are the approximate dates of the Classical period of music history? 1750 to 1820 OR 1830

(Score 1 point for each correct date)

B. Match the composer with his description. (Beethoven, Haydn, Mozart)

(Score 1 point for each correct match)

Haydn

Known for 104 symphonies, string quartets, piano works; liked "Surprise"

Mozart

As a child, performed for royalty around the world; died young; known for 41 symphonies, some operas, concertos, piano sonatas, and chamber music

Beethoven

Known for 32 piano sonatas, 9 symphonies; stormy temperament; became deaf; composed music for "Ode to Joy"

C. Matching: Write the letter in the space that best defines the term. (Score 1 point for each correct match)

B concerto

a. multi-movement work for orchestra

D minuet

b. large-scale work for solo instrument and orchestra

E sonata

c. multi-movement work for small chamber ensemble

C string quartet

d. French dance in moderate 3/4 time and ABA form

A symphony

e. multi-movement work for piano or solo instrument and piano

9. Draw the named notes using ledger lines. Notice the clef.

("Above" refers to above the staff and "Below" refers to below the staff.)



E above G below B above A below F below F above D below A below C above B below

10. Choose the item number from the right that best defines the given term.

6 *accelerando*

1 *allegretto*

1. moderately fast

3 *dolce*

9 *adagio*

2. gradually slower

2 *rallentando*

5 *tonic*

3. sweetly

10 *sequence*

7 *dominant*

4. forceful accent

4 *sforzando*

8 *a tempo*

5. first tone of scale, key center

6. gradually get faster

7. fifth tone of a scale, needs resolution

8. return to the original speed

9. slowly

10. melody motive repeated at successively higher or lower intervals