



**FESTIVAL THEORY TEST**

(Each item number is worth ten points)

Name Answer Key

Rating \_\_\_\_\_

(Superior 90-100, Excellent 80-89.5, Satisfactory 70-79.5, Fair 60-69.5, Needs Improvement <60)

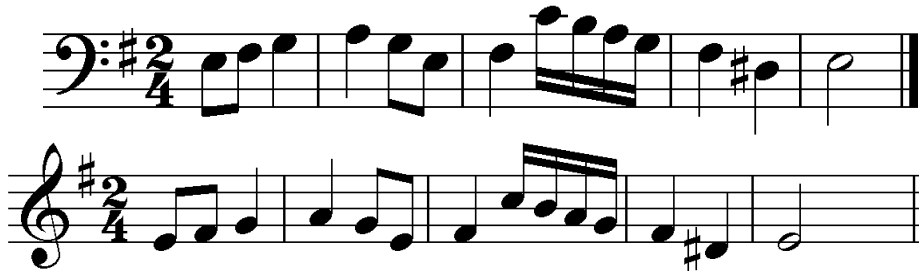
1. Write the indicated key signatures.



E Major      d minor      A Major      b minor      e minor

2. Transpose this melody to the treble clef.

(Score 2 points for each correct measure. Score partial credit -- .5, 1, 1.5 – for partially correct measures)



3. Choose the item number from the list on the right that best defines the given term.

6 *accelerando*

5 *adagio*

2 baton

4 reed

1 *vivace*

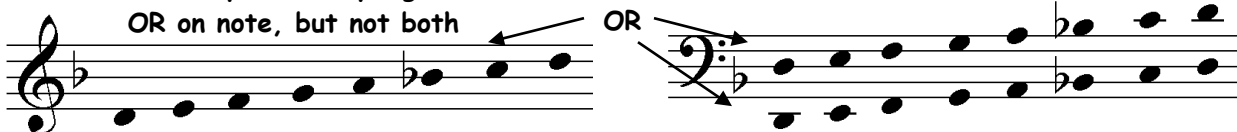
1. fast, lively
2. conductor's stick
3. keyboard instrument
4. thin strip of cane or wood used in woodwind instruments
5. slowly
6. gradually get faster
7. orchestra or choir director
8. first violinist

4. Draw a bass or treble clef, then write an ascending d natural minor scale.

(Score 2 points for clef, 1 point for each correct pitch. Subtract 5 points for incorrect scale direction)

**Flat may be in key signature**

**OR on note, but not both**



5. Give the family name (category) for each instrument named below.

cello string

trumpet brass

timpani percussion

flute woodwind

clarinet woodwind

